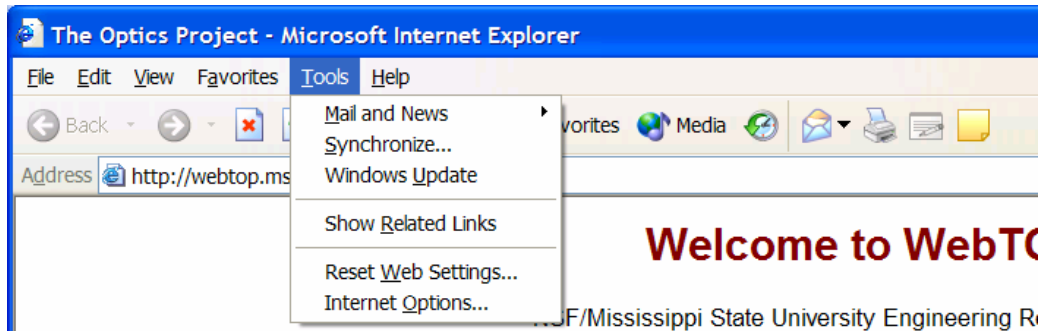
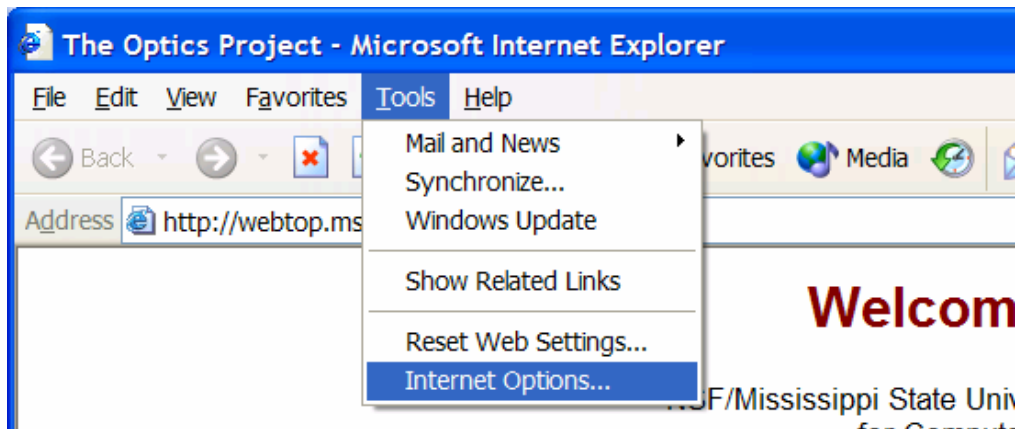


How to Set-Up Microsoft's Java Virtual Machine

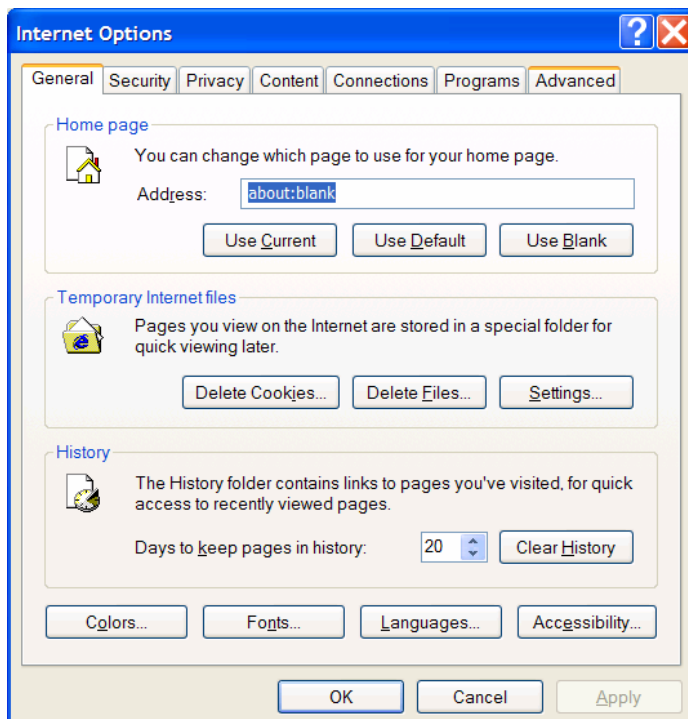
- After you start your browser, select the “Tools” menu:



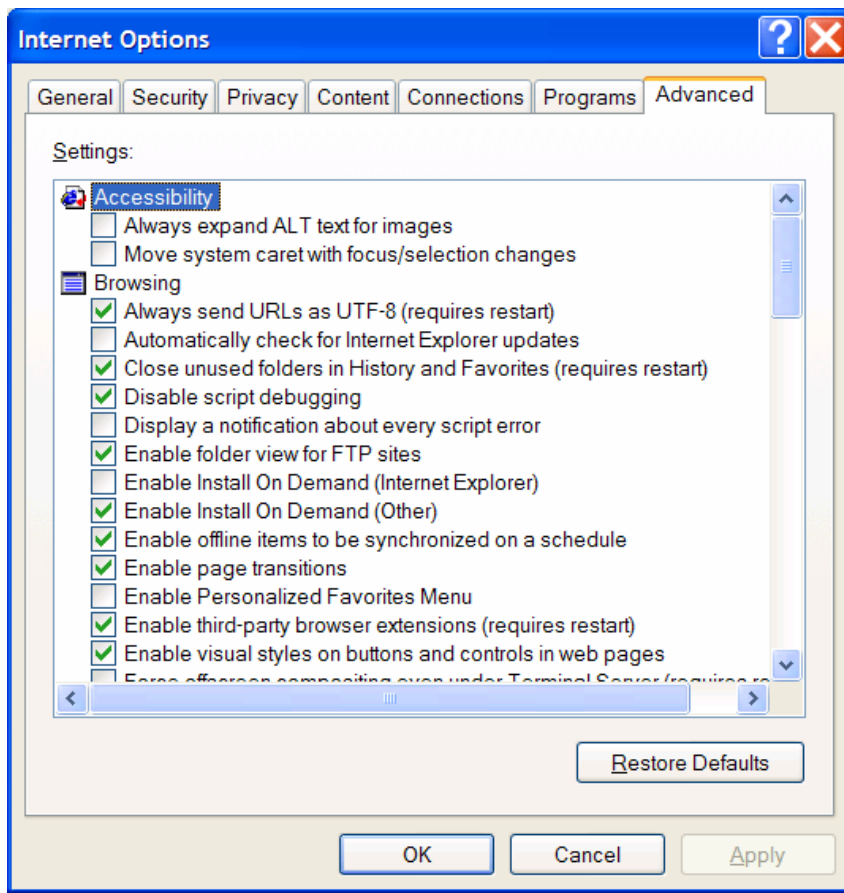
- Then select the “Internet Options...” menu:



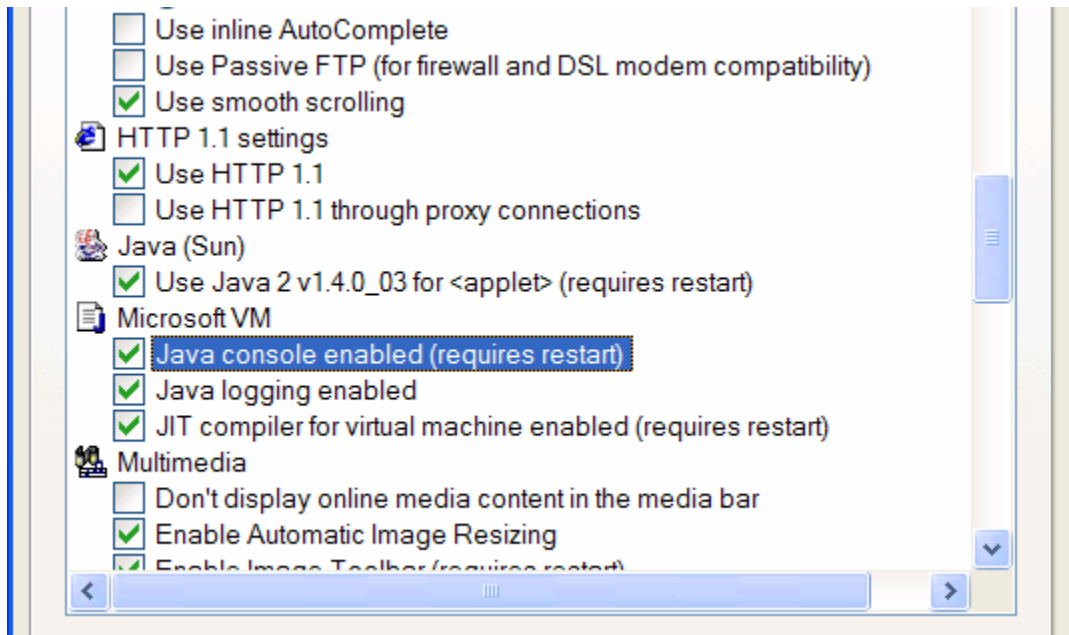
- You get a window similar to the following:



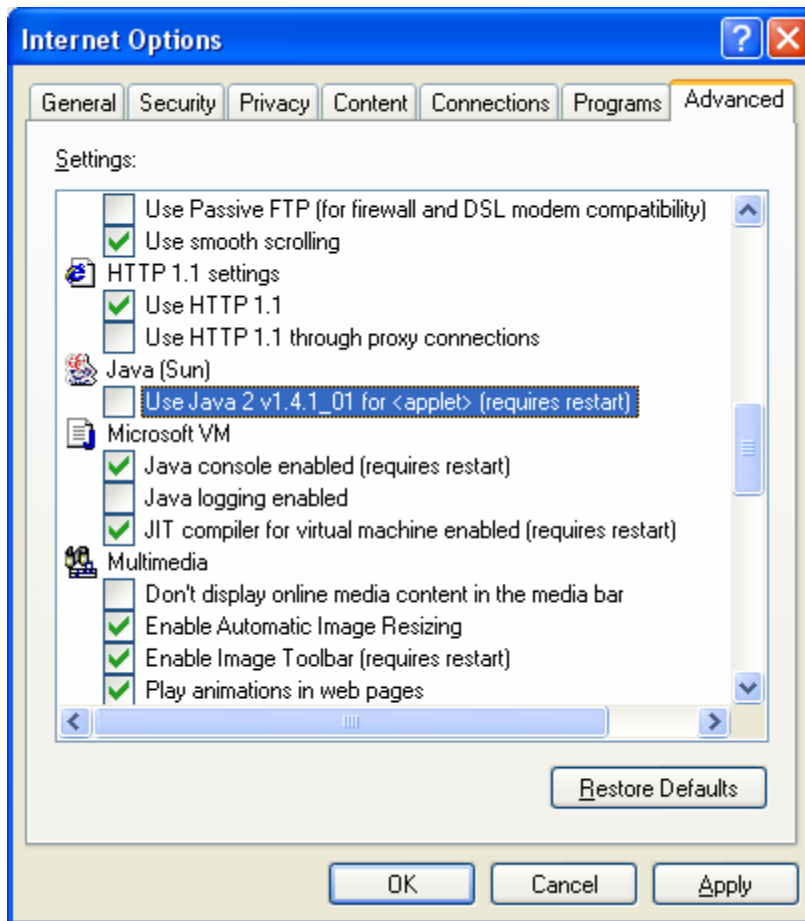
- Press the “Advanced Tab”:



- Scroll down until you get to see the “Java (Sun)” and “Microsoft VM” items:



- Unselect the item under “Java (Sun)” and select the items under “Microsoft VM”:



- Press, apply then OK
- Close all of your browser windows.
- Restart your browser. WebTOP should operate properly now. If it fails, restart your computer and try again.